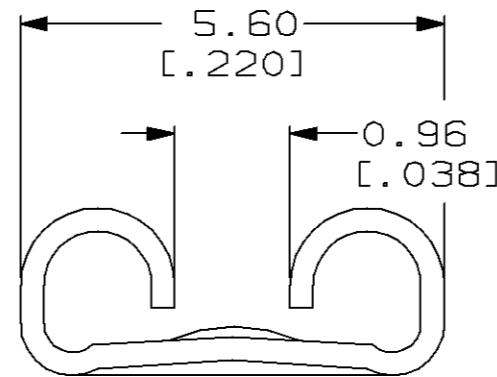
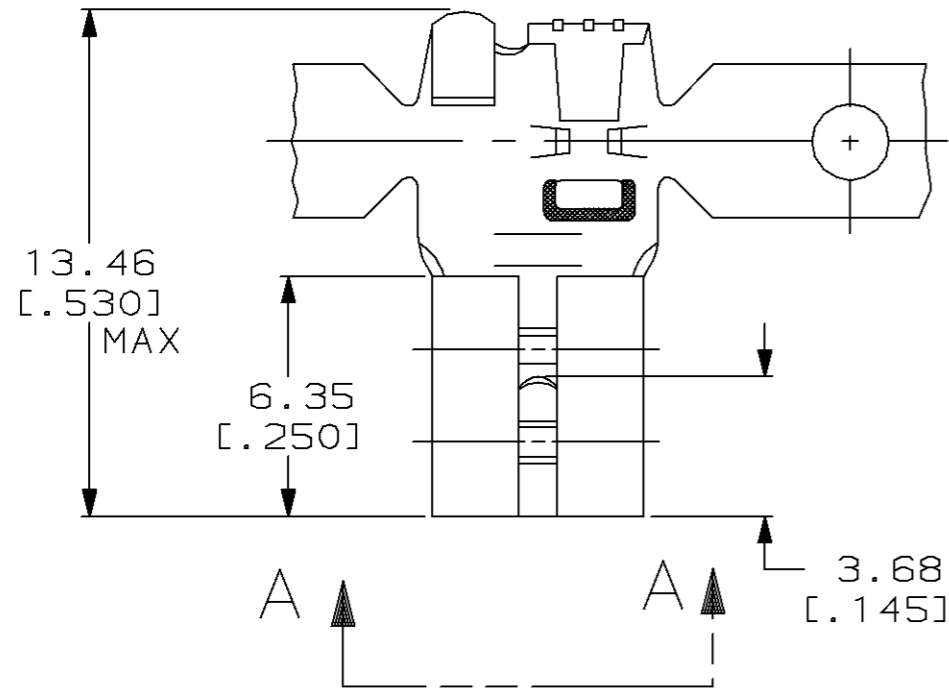
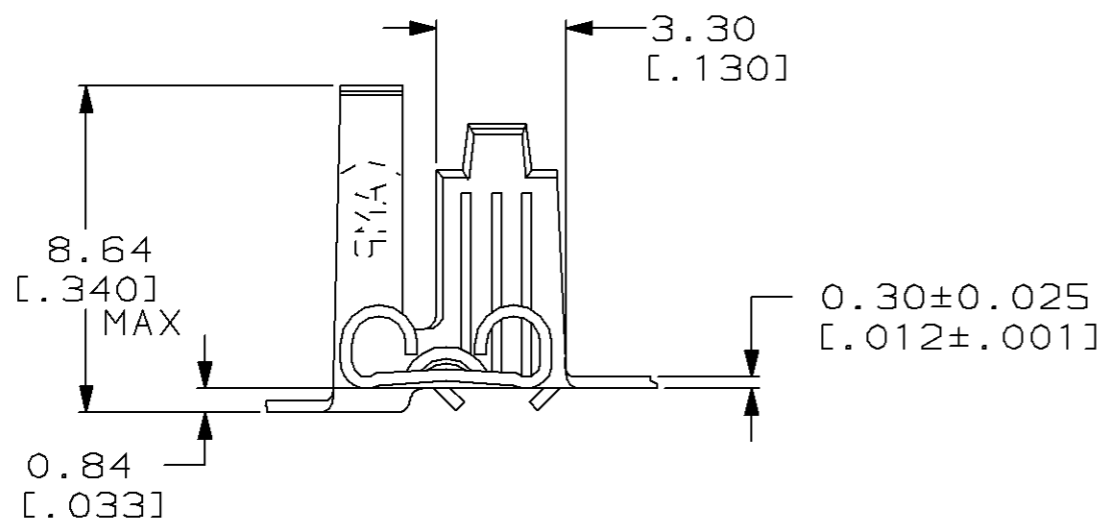


THIS DRAWING IS UNPUBLISHED. RELEASED FOR PUBLICATION, 19
 © COPYRIGHT 19 BY AMP INCORPORATED. ALL INTERNATIONAL RIGHTS RESERVED.

LOC	DIST	P	F	REVISIONS			
ZONE	LTR	DESCRIPTION	DATE	APPD			
AF	50			C	REVISED 0012-93	3/1/93	JR



VIEW A-A



1 CONTINUOUS STRIP ON REELS.

2.79-4.32 [.110-.170] DIA	0.5-1.3mm ² [20-16] AWG	TIN	0.51 [.020]	63417-2
INSUL RANGE	WIRE SIZE	FINISH	MATING TAB THK ±0.025 [.001]	PART NO 63417-1
DO NOT SCALE PRINT. UNLESS SPECIFIED DIMENSIONS IN mm [INCHES] TOLERANCES ON: 2 PLC DEC ± 0.25 [.010] 3 PLC DEC ± - ANGLES ± -	DR 12/20/85 JR RUTH CHK 12/20/85 G YETTER APPD 12/20/85 C MEYERS APPD 12/20/85 R KUZO PRODUCT SPEC -	AMP AMP Incorporated Harrisburg, PA 17105-3608		
MATERIAL H04 BRASS	FINISH SEE TABLE	NAME RECEPTACLE, FASTON, FLAG, 4.75 [.187] SERIES		
		SIZE B	CAGE CODE 00779	DRAWING NO C-63417
		SCALE 5:1	SHEET 1 OF 1	

THIS DRAWING IS A CONTROLLED DOCUMENT FOR AMP INCORPORATED. IT IS SUBJECT TO CHANGE AND THE CONTROLLING ENGINEERING ORGANIZATION SHOULD BE CONTACTED FOR THE LATEST REVISION.